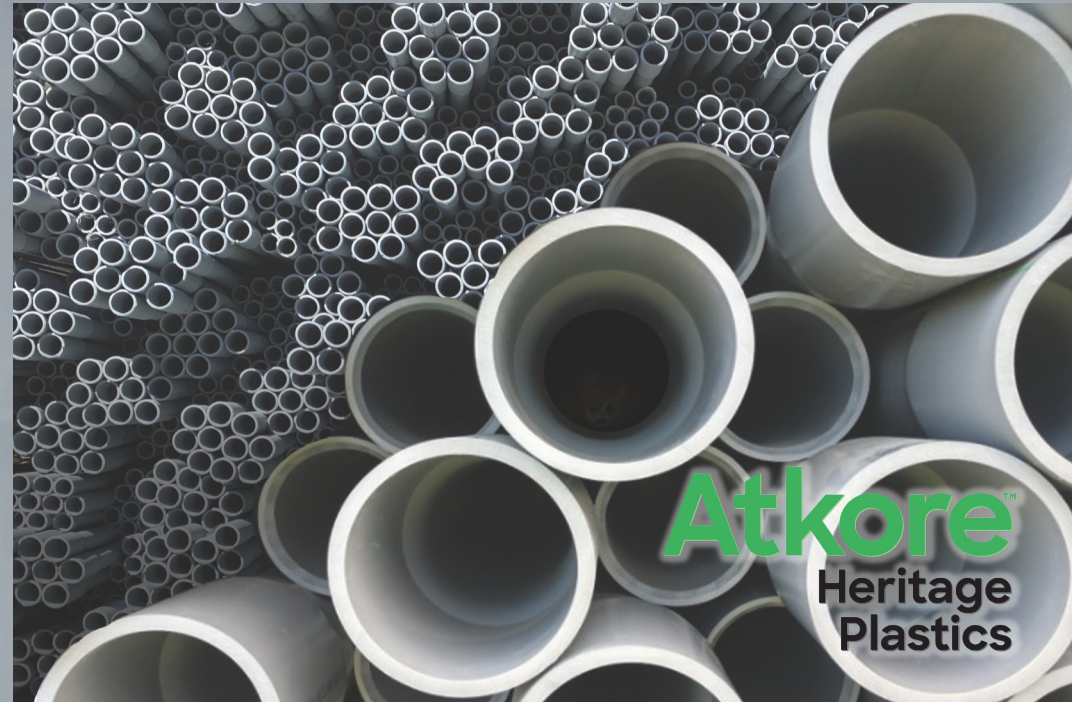
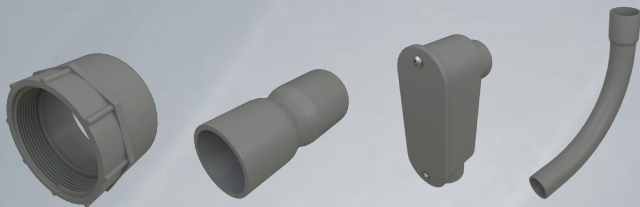




AGS offers a complete line of rigid PVC conduit, utility duct and fittings featuring Atkore Heritage Plastics. Heritage Plastics is vigilant about high quality and innovation to bring our customers the top products on the market. Their products have been proven durable and effective for years of maintenance free performance in underground, encased and exposed applications.



602.244.8500

201 South 28th Street | Phoenix, AZ 85034

alliedgroupsales.com

**PVC FITTINGS LOCAL
STOCK GUIDE**



Locally Stocked PVC Fittings

PVC Conduit Bodies

C07	3/4" Type C Access Fitting
C10	1" Type C Access Fitting
LB05	1/2" Type LB Access Fitting
LB07	3/4" Type LB Access Fitting
LB10	1" Type LB Access Fitting
LB12	1-1/4" Type LB Access Fitting
LB15	1-1/2" Type LB Access Fitting
LB20	2" Type LB Access Fitting
LB25	2-1/2" Type LB Access Fitting
LB30	3" Type LB Access Fitting
LL07	3/4" Type LL Access Fitting
LL10	1" Type LL Access Fitting
LR05	1/2" Type LR Access Fitting
LR10	1" Type LR Access Fitting
T07	3/4" Type T Access Fitting
T10	1" Type T Access Fitting

PVC Couplings

CP05	1/2" PVC Coupling, Molded
CP07	3/4" PVC Coupling, Molded
CP10	1" PVC Coupling, Molded
CP12	1-1/4" PVC Coupling, Molded
CP15	1-1/2" PVC Coupling, Molded
CP20	2" PVC Coupling, Molded
CP25	2-1/2" PVC Coupling, Molded
CP30	3" PVC Coupling, Molded
CP35	3-1/2" PVC Coupling, Molded
CP40	4" PVC Coupling, Molded
CP50	5" PVC Coupling, Molded
CP60	6" PVC Coupling, Molded

PVC Long Line Couplings

LLC20	2" Long Line Coupling, Molded
LLC40	4" Long Line Coupling, Molded

PVC Two Piece Expansion Couplings

EJ07	3/4" Two-Piece Coupling
EJ10	1" Two-Piece Coupling
EJ15	1-1/2" Two-Piece Coupling
EJ20	2" Two-Piece Coupling
EJ30	3" Two-Piece Coupling
EJ40	4" Two-Piece Coupling

PVC End Bells

MEB07	3/4" End Bell, Molded
MEB10	1" End Bell, Molded
MEB12	1-1/4" End Bell, Molded
MEB15	1 1/2" End Bell, Molded
MEB20	2" End Bell, Molded
MEB25	2-1/2" End Bell, Molded

MEB30	3" End Bell, Molded
MEB35	3 1/2" End Bell, Molded
MEB40	4" End Bell, Molded
MEB50	5" End Bell, Molded
MEB60	6" End Bell, Molded

PVC End Caps

EC07	3/4" End Cap, Molded
EC10	1" End Cap, Molded
EC12	1-1/4" End Cap, Molded
EC15	1-1/2" End Cap, Molded
EC20	2" End Cap, Molded
EC25	2-1/2" End Cap, Molded
EC30	3" End Cap, Molded
EC40	4" End Cap, Molded
EC50	5" End Cap, Molded

PVC Female Adapters

FA05	1/2" Female Adapter, Molded
FA07	3/4" Female Adapter, Molded
FA10	1" Female Adapter, Molded
FA12	1-1/4" Female Adapter, Molded
FA15	1-1/2" Female Adapter, Molded
FA20	2" Female Adapter, Molded
FA25	2-1/2" Female Adapter, Molded
FA30	3" Female Adapter, Molded
FA35	3-1/2" Female Adapter, Molded
FA40	4" Female Adapter, Molded
FA50	5" Female Adapter, Molded
FA60	6" Female Adapter, Molded

PVC Terminal Adapters

TA05	1/2" Male, Molded
TA07	3/4" Male, Molded
TA10	1" Male, Molded
TA12	1-1/4" Male, Molded
TA15	1-1/2" Male, Molded
TA20	2" Male, Molded
TA25	2-1/2" Male, Molded
TA30	3" Male, Molded
TA35	3-1/2" Male, Molded
TA40	4" Male, Molded
TA50	5" Male, Molded
TA60	6" Male, Molded

PVC Reducer Bushings

MR1007	1 x 3/4", Molded
MR1512	1-1/2 x 1-1/4", Molded
MR2012	2 x 1-1/4", Molded
MR2015	2 x 1-1/2", Molded
MR2520	2-1/2 x 2", Molded

MR3020	3 x 2", Molded
MR3025	3 x 2-1/2", Molded
MR4035	4 x 3-1/2", Molded
PVC Schedule 40 - Special Radius Elbows	
F402009036	2" x 90 deg x 36", Belled
F402509036	2-1/2" x 90 deg x 36", Belled
F403009036	3" x 90 deg x 36" Belled
F4040022	4" x 22.5 deg Belled
F404009036	4" x 90 deg x 36", Belled
F404009036P	4" x 90 deg x 36" Plain
F404009048	4" x 90 deg x 48", Belled
F404009048P	4" x 90 deg x 4, Plain
F406009048P	6" x 90 deg x 48", Plain
F4005090	2" x 90 deg x 24", Plain

PVC Schedule 40 - Standard Radius Elbows

F4005090P	1/2" x 90 deg, Plain
F4007545	3/4" x 45 deg, Belled
F4007545P	3/4" x 45 deg, Plain
F4007590	3/4" x 90 deg, Belled
F4007590P	3/4" x 90 deg, Plain
F4010045	1" x 45 deg, Belled
F4010045P	1" x 45 deg, Plain
F4010090	1" x 90 deg, Belled
F4010090P	1" x 90 deg, Plain
F4012545	1-1/4" x 45 deg, Belled
F4012545P	1-1/4" x 45 deg, Plain
F4012590	1-1/4" x 90 deg, Belled
F4012590P	1-1/4" x 90 deg, Plain
F4015045	1-1/2" x 45 deg, Belled
F4015045P	1-1/2" x 45 deg, Plain
F4015090	1-1/2" x 90 deg, Belled
F4015090P	1-1/2" x 90 deg, Plain
F4020022P	2" x 22.5 deg, Plain
F4020030P	2" x 30 deg, Plain
F4020045	2" x 45 deg Belled
F4020045P	2" x 45 deg, Plain
F4020090	2" x 90 deg, Belled
F402009024	2" x 90 deg x 24", Belled
F402009024P	2" x 90 deg x 24", Plain
F402009036P	2" x 90 deg x 36", Plain
F4020090P	2" x 90 de, Plain
F4025045	2-1/2" x 45 deg, Belled
F4025045P	2-1/2" x 45 deg, Plain
F4025090	2-1/2" x 90 deg, Belled
F402509036P	2-1/2" x 90 deg x 36", Plain
F4025090P	2-1/2" x 90 deg, Plain
F4030022P	3" x 22.5 deg, Plain
F4030030P	3" X 30 Plain
F4030045	3" x 45 deg Belled
F4030045P	3" x 45 deg Plain
F4030090	3" x 90 deg, Belled
F403009024	3" x 90 deg x 24", Belled
03009036P	3" x 90 deg x 36", Plain

F4030090P	3" x 90 deg, Plain
F4035045P	3-1/2" x 45 deg Plain
F4035090	3-1/2" x 90 deg Belled
F4035090P	3-1/2" x 90 deg Plain
F4040022P	4 " x 22.5 deg, Plain
F4040030P	4" X 30 Plain
F4040045	4" x 45, deg, Belled
F4040045P	4" x 45 deg, Plain
F4040090	4" x 90 deg, Belled
F404009024	4" x 90 deg x 24 in, Belled
F4040090P	4" x 90 deg, Plain
F4050090	5" x 90 deg, Belled
F4050090P	5"n x 90 deg, Plain
F4060090P	6" x 90 deg, Plain

PVC Schedule 80 - Standard Radius Elbows

F8007590P	3/4" x 90 deg, Plain
F8010090P	1" x 90 deg, Plain
F8012590P	1-1/4" x 90 deg, Plain
F8015090P	1-1/2" x 90 deg, Plain
F8020045P	2" x 45 deg, Plain
F8020090P	2" x 90 deg, Plain
F8030090P	3" x 90 deg, Plain

PVC Base Spacers

BV2030	2 x 3 Base Spacer for Conduit
BV4020	4 x 2 Base Spacer for Conduit
BV4030	4 x 3 Base Spacer for Conduit

Intermediate Spacers for Conduit

IV2030	2 x 3 Intermediate Spacer
IV4020	4 x 2 Intermediate Spacer
IV4030	4 x 3 Intermediate Spacer

PVC Service Entrance Heads

MH15	1-1/2" Weatherhead Cap, Molded
MH25	2-1/2 in Weatherhead Cap, Molded

Tapered Poly Plugs

UTP25	2-1/2" Universal Tapered Plug
UTP35	3-1/2" Universal Tapered Plug
UTP40	4" Universal Tapered Plug

PVC Pipe Straps

PS12	1-1/4" PVC Two-Hole Pipe Strap
------	--------------------------------

J-Box

JB12124	J-Box W/BRS Screw Ins 12x12x4
JB12126	J-Box W/BRS Screw Ins 12x12x6
JB442	J-Box W/BRS Screw Ins 4x4x2
JB444	J-Box W/BRS Screw Ins 4x4x4
JB664	J-Box W/BRS Screw Ins 6x6x4
JB666	J-Box W/BRS Screw Ins 6x6x6
JB884	J-Box W/BRS Screw Ins 8x8x4
JB887	J-Box W/BRS Screw Ins 8x8x7

Primer & Solvent Cement for PVC Conduit

PRMP20	PVC Primer, Purple, Quart
--------	---------------------------

Solvent Cement for PVC Conduit

CEMCR10	PVC Cement, Regular Body, Clear, Pt
CEMCR20	PVC Cement, Regular Body, Clear, Qt
CEMG20	PVC Cement, Medium Body, Gray, Qt

